

Racial Disparities in Regional Center Purchase of Services Data: Collaborating with Community Groups to Disseminate Data and Encourage Family Support

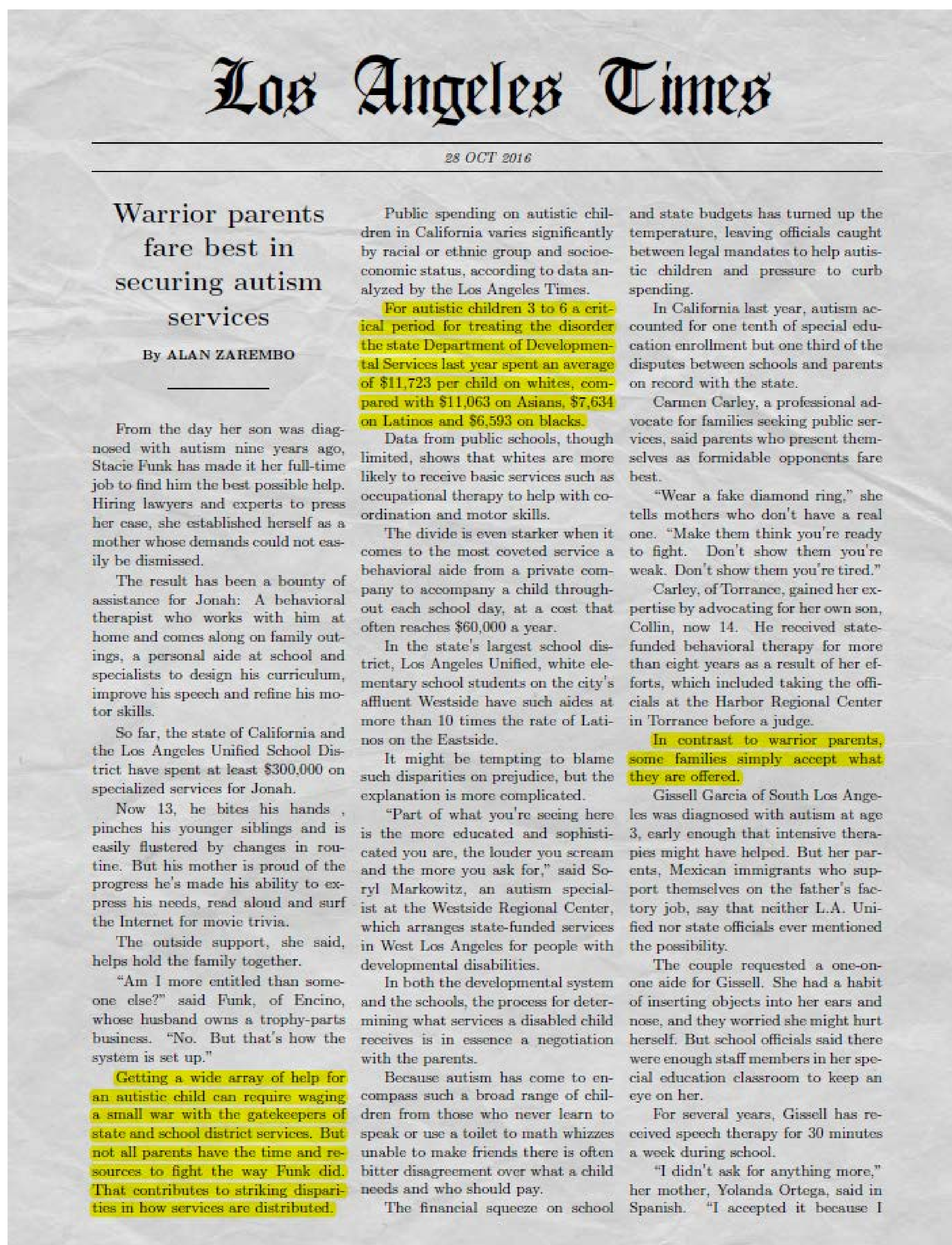
Fran Goldfarb, MA, MCHES, CPSP¹; Ivy Díaz, MPH, CHES¹; Irene Martinez (FEI); Vanda Yung (CPAD); Barbara Wheeler, PhD¹

The California Regional Centers for Developmental Disabilities are required to post their Purchase of Service data disaggregated by race/ethnicity, language, age, and disability annually on their website and have open meetings to discuss these data with the community. Families had difficulty understanding and responding to this data, so the USC UCEDD, in collaboration with minority serving groups, developed strategies to explain the data and help families provide public testimony.

Our Partner Community Groups

Fiesta Educativa, Inc. (FEI) and Chinese Parent Association for the Disabled (CPAD) were founded to address the need of minority parents to obtain information services and assistance for parents of children with special needs. Since their founding, each group has expanded in scope and capacities.

Visit our partners at:
www.fiestaeducativa.org
www.cpad.org



Why Work with Community Groups?

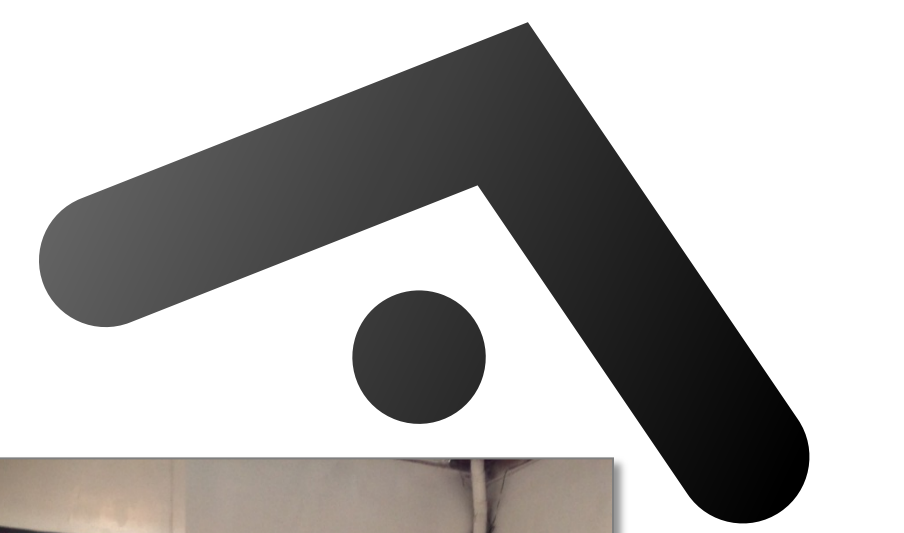
FEI and CPAD serve as cultural brokers and gatekeepers to minority community populations. The USC UCEDD can reach minority families through cultural brokers that help with:

- Diverse beliefs about health
- Cultural views about conditions and their causes
- Cultural influence on help-seeking behaviors and attitudes

Source: Jezewski, Mary Ann, and Paula Sotnik. Culture brokering: Providing culturally competent rehabilitation services to foreign-born persons. Buffalo, NY: Center for International Rehabilitation Research Information and Exchange, 2001.

As a parent, for so many years, I still feel that RC system is so complicated... We don't know what we don't know! Yes, we can find POS Guideline at RC website, but how many parent can understand or knows how to search?

-CPAD Parent Testimony



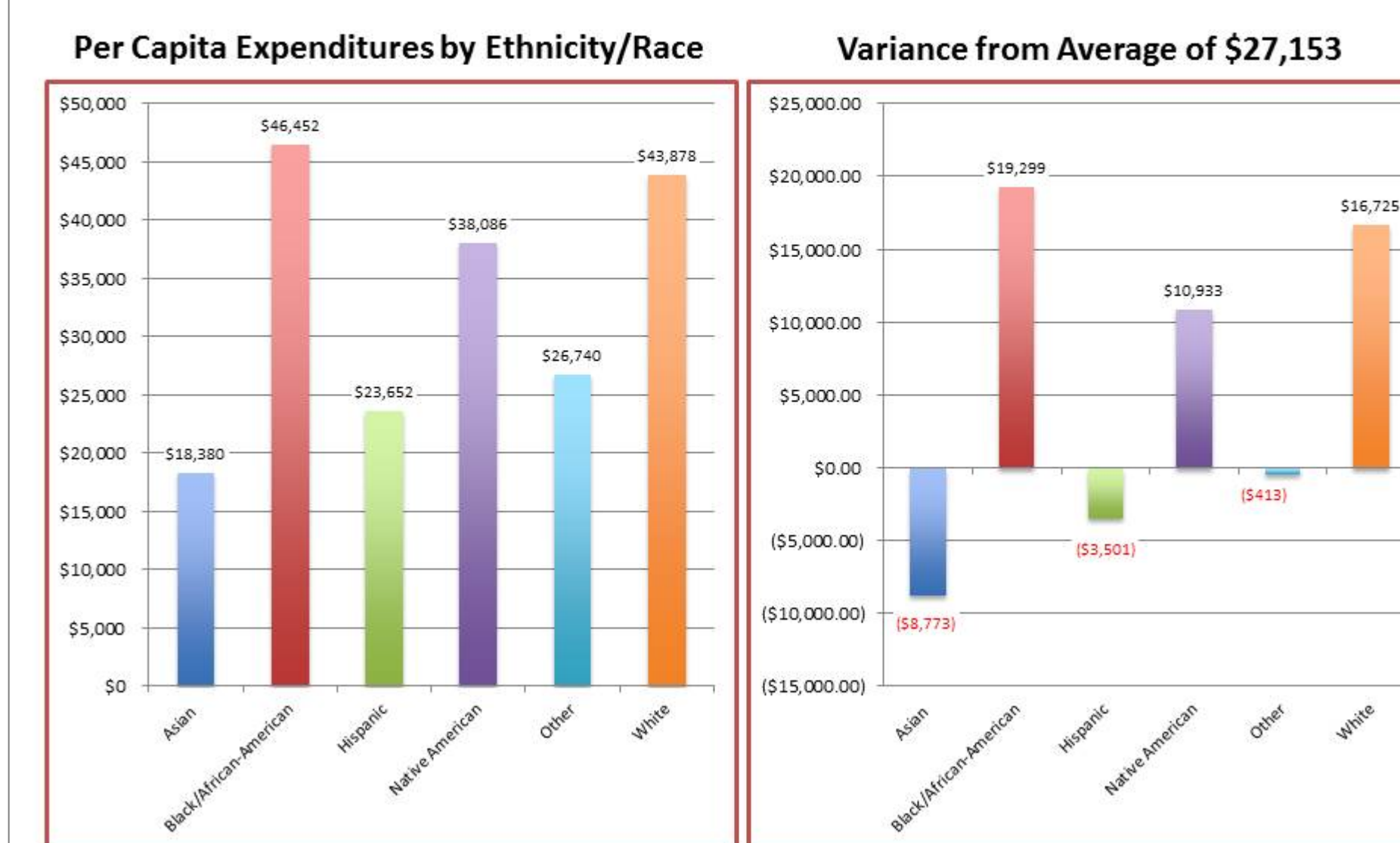
FEI and CPAD parents attend public meetings and deliver testimonies

How to Engage Minority Communities?

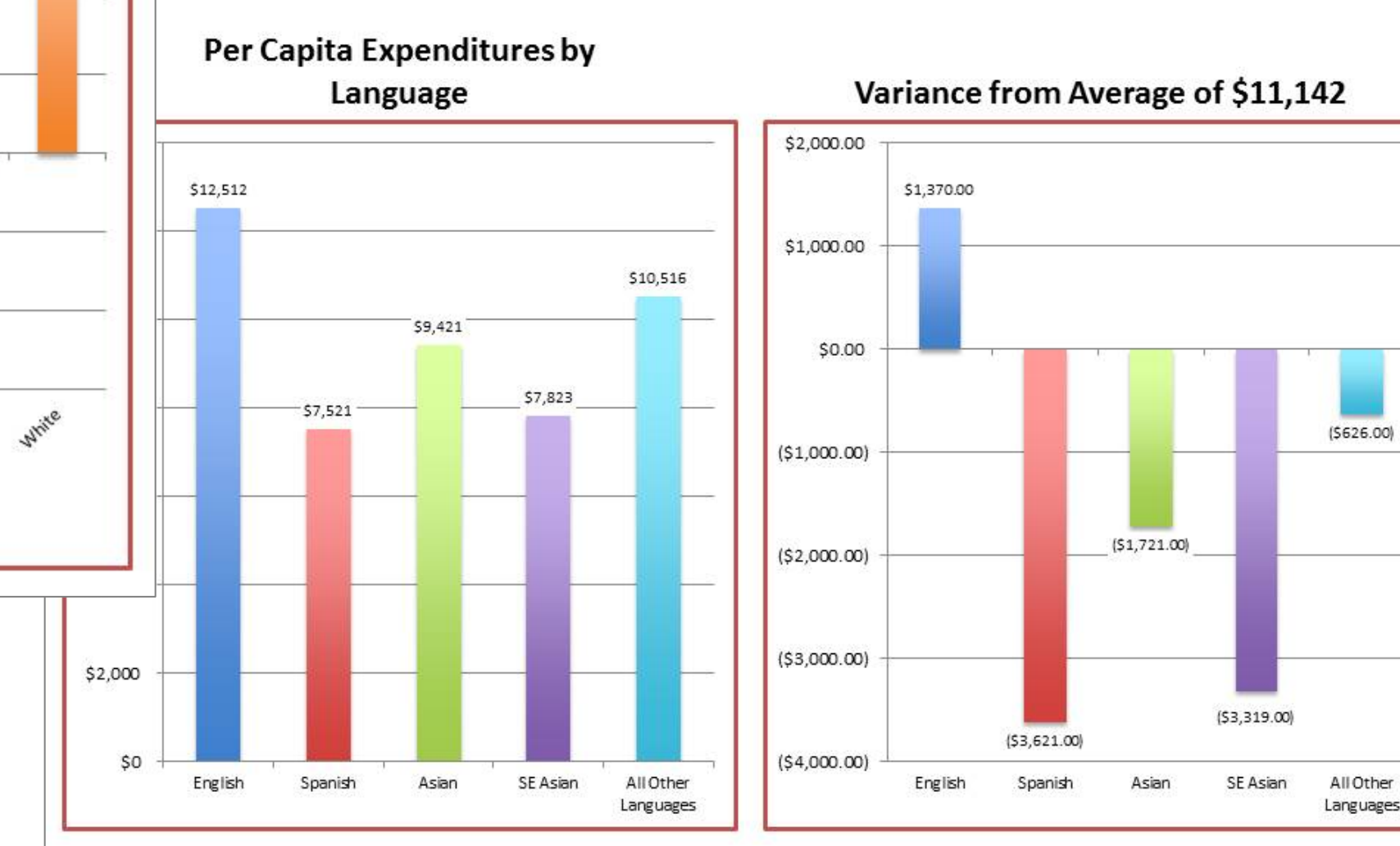
- ✓ Use community groups as the gateway because of existing trust
- ✓ Help groups understand what the data mean for them as a group
- ✓ Help identify service barriers
- ✓ Help prepare testimony for public meetings
- ✓ Follow-up activities after public meetings

The catalyst for the shift toward racial disparity reform was the convening of a public hearing the CA Senate Select Committee on Autism and Related Disorders under Senate Pro Tempore Darryl Steinberg in response to public outrage stemming from this 2011 Los Angeles Times article.

ELARC – Ages 22 and older FY14-15



SGPRC – All ages FY14-15



Age Group	Race	Count	Expenditure	Average	% of Total
For All Ages	Asian	408	\$18,225,200	\$44,670	18.2%
	Black/African American	198	\$3,638,400	\$18,376	1.5%
	Hispanic	2,446	\$22,225,200	\$9,086	90.3%
	Other	19	\$14,225,200	\$743,426	0.1%
	Native American	10	\$14,225,200	\$1,422,520	0.0%
	Other Ethnicity/Race	20	\$14,225,200	\$711,260	0.1%
For age 22 years and older	Asian	400	\$18,225,200	\$45,563	18.2%
	Black/African American	190	\$3,638,400	\$19,150	1.5%
	Hispanic	2,440	\$22,225,200	\$9,108	90.3%
	Other	19	\$14,225,200	\$746,326	0.1%
	Native American	10	\$14,225,200	\$1,422,520	0.0%
	Other Ethnicity/Race	20	\$14,225,200	\$711,260	0.1%

USC UCEDD Staff convert data into charts and figures to train FEI and CPAD parents to then train other parents

Each Regional Center posts Purchase of Service Data

¹University of Southern California University Center for Excellence in Developmental Disabilities